



HP EliteDesk 705 G4 Small Form Factor PC

Space-saving powerful performance

Powered for the enterprise, the HP EliteDesk 705 SFF is one of our most secure PCs that delivers impressive value with the performance required by today's high-productivity workforce in a new space-saving and stylish design.



HP recommends Windows 10 Pro.

- Windows 10 Pro¹
- HP Sure Start Gen4²

Pure performance and enhanced visual experience

- Enjoy the powerful performance of the latest 65W AMD Ryzen™ 3 PRO and Ryzen™ 5 PRO Processors³ or amplify performance with the optional 95W AMD Ryzen™ 7 PRO Processor^{3,4} with up to 8 cores, and 16 threads⁴.

Expansion that extends your investment

- Configure the new space-saving design of the expandable HP EliteDesk 705 SFF with two bays and two slots, plus, two additional M.2 slots, and plenty of configurable ports.

Strong security, powerful manageability

- Get powerful protection and simplified management. HP Sure Start Gen4² protects against BIOS attacks while the HP Manageability Integration Kit⁵ allows you to easily manage devices through Microsoft System Center Configuration Manager.

Reliability for the long haul

- This work-ready PC is designed for a long life-cycle with up to 18-months of platform stability. It passed 120,000 hours of testing in the HP Total Test Process⁶, is designed to undergo MIL-STD 810G testing⁷, and has an optional removable dust filter⁴.

Featuring

- Power through your day with Windows 10 Pro with built-in security, collaboration, and connectivity.
- Protect the firmware that antivirus can't reach! The hardware-enforced self-healing protection offered by HP Sure Start Gen4 automatically recovers the BIOS from malware, rootkits, or corruption.
- Keep your critical processes running, even if malware tries to shut them down. HP Sure Run extends hardware enforced self-healing protection into the operating system to guard against malicious attacks on applications and processes.
- Help protect your PC from websites, attachments, malware, ransomware, and viruses with hardware-enforced security from HP Sure Click.
- Quickly and securely restore PCs to the latest image using a network connection with optional HP Sure Recover.
- ITDMs can quickly help create, improve, and secure custom Windows images with HP Image Assistant Gen3.
- The HP Manageability Integration Kit helps speed up image creation and management of hardware, BIOS, and security through Microsoft System Center Configuration Manager.
- Keep data out of reach and defend against theft, attacks, and unauthorized users with HP Client Security Manager Gen4.

HP EliteDesk 705 G4 Small Form Factor PC Specifications Table

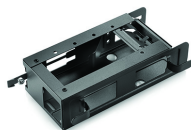


Available Operating Systems	Windows 10 Pro 64 – HP recommends Windows 10 Pro. ¹ Windows 10 Home 64 ¹ Windows 10 Home Single Language 64 ¹ FreeDOS
Processor family ⁸	7th Generation AMD A10 APU processor (A10-9700); 7th Generation AMD A6 APU processor (A6-9500); 7th Generation AMD A8 APU processor (A8-9600); AMD Ryzen™ 3 PRO processor; AMD Ryzen™ 5 PRO processor; AMD Ryzen™ 7 PRO processor; 6th Generation AMD A6 APU processor (A6-8570); 6th Generation AMD A10 APU processor (A10-8770); 6th Generation AMD A12 APU processor (A12-8870)
Available Processors ^{3,32}	AMD Ryzen™ 5 PRO 2400G Quad-Core with Radeon™ Vega 11 Graphics (3.6 GHz base clock, up to 3.9 GHz max boost clock, 384 KB L1 cache, 2 MB L2 cache, 4 MB L3 cache); AMD Ryzen™ 3 PRO 2200G Quad-Core with Radeon™ Vega 8 Graphics (3.5 GHz base clock, up to 3.7 GHz max boost clock, 348 KB L1 cache, 2 MB L2 cache, 4 MB L3 cache); AMD Ryzen™ 7 PRO 2700 Eight-Core (3.2 GHz base clock, up to 4.1 GHz max boost clock, 768 KB L1 cache, 4 MB L2 cache, 16 MB L3 cache); AMD Ryzen™ 7 PRO 2700X Eight-Core (3.6 GHz base clock, up to 4.1 GHz max boost clock, 768 KB L1 cache, 4 MB L2 cache, 16 MB L3 cache); AMD Ryzen™ 5 PRO 2600 Six-Core (3.4 GHz base clock, up to 3.9 GHz max boost clock, 576 KB L1 cache, 3 MB L2 cache, 16 MB L3 cache); AMD PRO A8-9600 APU Quad-Core with Radeon™ R7 Graphics (3.1 GHz base clock, up to 3.4 GHz max boost clock, 2 MB L2 cache); AMD PRO A6-9500 APU Dual-Core with Radeon™ R5 Graphics (3.5 GHz base clock, up to 3.8 GHz max boost clock, 1 MB L2 cache); AMD PRO A10-9700 APU Quad-Core with Radeon™ R7 Graphics (3.5 GHz base clock, up to 3.8 GHz max boost clock, 2 MB L2 cache); AMD PRO A12-8870 APU Quad-Core with Radeon™ R7 Graphics (3.7 GHz base clock, up to 4.2 GHz max boost clock, 2 MB L2 cache); AMD PRO A10-8770 APU Quad-Core with Radeon™ R7 Graphics (3.5 GHz base clock, up to 3.8 GHz max boost clock, 2 MB L2 cache); AMD PRO A6-8570 APU Dual-Core with Radeon™ R5 Graphics (3.5 GHz base clock, up to 3.8 GHz max boost clock, 1 MB L2 cache)
Chipset	AMD B350 FCH
Form factor	Small form factor
Maximum memory	64 GB DDR4-2666 SDRAM Transfer rates up to 2666 MT/s.
Memory slots	4 DIMM
Internal storage	500 GB up to 2 TB 7200 rpm SATA HDD ⁷ up to 500 GB SATA SED ⁷ 128 GB up to 512 GB SATA SSD ⁷ 256 GB up to 512 GB SATA SED Opal 2 SSD ⁷ 256 GB up to 512 GB PCIe® NVMe™ SSD ⁷ 128 GB up to 1 TB PCIe® NVMe™ TLC M.2 SSD ⁷ 256 GB up to 512 GB PCIe® NVMe™ SED Opal 2 TLC M.2 SSD ⁷
Optical drive	HP 9.5 mm Slim DVD-Writer; HP 9.5 mm Slim DVD-ROM
Available Graphics	Integrated: AMD Radeon™ R5 Graphics; AMD Radeon™ R7 Graphics; AMD Radeon™ Vega 8 Graphics; AMD Radeon™ RX Vega 11 Graphics Discrete: AMD Radeon™ R7 430 Graphics (2 GB GDDR5 dedicated) ¹¹
Audio	Conexant CX20632 codec, universal audio jack front port, audio line in and out rear ports (3.5 mm), multi-streaming capable
Expansion slots	1 M.2 2230; 1 M.2 2230/2280; 1 PCI x1; 1 PCIe x16 (1 M.2 slot for WLAN and 1 M.2 2230/2280 slot for storage.)
Ports and Connectors	Front: 1 headset connector; 1 USB 2.0; 1 USB 2.0 (fast charging); 1 USB Type-C™ (charging); 2 USB 3.1 Gen 1 Rear: 1 audio-in; 1 audio-out; 1 power connector; 1 RJ-45; 1 serial and PS/2 ports combination; 2 DisplayPort™ 1.2; 2 USB 3.1 Gen 1; 4 USB 2.0 Optional: 1 DisplayPort™ 1.2; 1 HDMI 2.0; 1 serial; 1 USB 3.1 Type-C™ Gen 1 (DisplayPort™); 1 VGA
Input devices	HP PS/2 Business Slim Keyboard; HP USB Conferencing Keyboard; USB Business Slim Wired Keyboard; HP USB Business Slim Smart Card (CCID) Keyboard; HP PS/2 Mouse; HP USB 1000 dpi Laser Mouse; HP USB Optical Mouse ¹⁴ ;
Communications	LAN: Realtek RTL8111EPH GbE; WLAN: Intel® Dual Band Wireless-AC 9260 802.11ac (2x2) and Bluetooth® 5 M.2, non-vPro™; Realtek 802.11a/b/g/n/ac (2x2) and Bluetooth® 4.2 Combo;
Drive Bays	One 3.5" HDD; Two 2.5" HDD
Environmental	Operating temperature: 10 to 35°C; Operating humidity: 10 to 90% RH
Available Software	Absolute Persistence module; HP Hotkey Support; HP Noise Cancellation Software; HP Recovery Manager; HP Secure Erase; HP Support Assistant; Native Miracast Support; HP Wireless Wakeup; Buy Office (sold separately); HP LAN-Wireless Protection; HP Sure Recover; Windows Defender; HP JumpStarts ^{4,15,16,18,19,21}
Security management	DriveLock; Hood sensor; HP BIOSphere; HP Credential Manager; HP Device Access Manager; HP Password Manager; HP Power On Authentication; HP Security Manager; HP Spare Key; Power-on password (via BIOS); RAID configurations; SATA port disablement (via BIOS); Serial enable/disable (via BIOS); Setup password (via BIOS); Support for chassis padlocks and cable lock devices; USB enable/disable (via BIOS); Master Boot Record Security; HP Client Security Suite Gen 4; HP Sure Start Gen 4; Pre-boot Authentication; HP Sure Run; Trusted Platform Module TPM 2.0 Embedded Security Chip shipped with Windows 10 (Common Criteria EAL4+ Certified)(FIPS 140-2 Level 2 Certified) ^{6,24,25,26,27,28,29,31}
Management features	HP BIOS Config Utility (download); HP Client Catalog (download); HP Driver Packs (download); HP System Software Manager (download); Update BIOS via Cloud or Network (BIOS feature); Ivanti Management Suite; HP Management Integration Kit for Microsoft System Center Configuration Management Gen 2 ^{5,22,23}
Power	180 W internal power supply, up to 92% efficiency, active PFC
Dimensions	9.5 x 27 x 29.6 cm
Weight	4.53 kg (Exact weight depends on configuration.)
Energy efficiency compliance	ENERGY STAR® certified; EPEAT® registered; CECP; SEPA; CCC ⁹
Environmental specifications	Low halogen ¹⁰
Warranty	3 year (3-3-3) limited warranty and service offering includes 3 years of parts, labor and on-site repair. Terms and conditions vary by country. Certain restrictions and exclusions apply.

HP EliteDesk 705 G4 Small Form Factor PC

Accessories and services (not included)

HP DM VESA Power Supply Holder Kit



Simplify cable management when mounting your HP Desktop Mini with the HP DM VESA Power Supply Holder Kit, which attaches to your HP Desktop Mini Security/Dual VESA Sleeve v2 (2JA32AA) to reduce cable clutter from the PC's power supply cable and brick. Proven performance and reliability to deliver maximum investment protection. Offering the perfect combination of performance, reliability and investment protection to any IT environment. For businesses that require superior stability and manageability with low lifecycle costs, or desktops with proven technology, superior price/performance and a wide choice of features, or even entry-level PCs that balance price and essential computing capabilities – the HP Desktop family holds the solution.

Product number: 1RL87AA

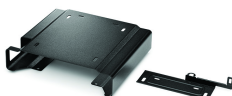
HP B300 PC Mounting Bracket



Customize an altogether better solution with the HP B300 PC Mounting Bracket, which lets you attach your HP Workstation, HP Desktop Mini, HP Chromebox or select HP Thin Client directly behind select 2017 and 2018 HP EliteDisplays and HP Z Displays.¹ Customize an altogether better solution with the HP B300 PC Mounting Bracket, which lets you attach your HP Workstation, HP Desktop Mini, HP Chromebox or select HP Thin Client directly behind select 2017 and 2018 HP EliteDisplays and HP Z Displays.¹ Offering the perfect combination of performance, reliability and investment protection to any IT environment. For businesses that require superior stability and manageability with low lifecycle costs, or desktops with proven technology, superior price/performance and a wide choice of features, or even entry-level PCs that balance price and essential computing capabilities – the HP Desktop family holds the solution.

Product number: 2DW53AA

HP Desktop Mini Security/Dual VESA Sleeve v2



Wrap your HP Desktop Mini PC in the HP Desktop Mini Security/Dual VESA Sleeve v2 to securely mount it—with or without an Expansion Module¹—behind your display, position the solution on a wall, and lock it down with the integrated security bracket and optional HP Ultra-Slim Cable Lock. Wrap your HP Desktop Mini PC in the HP Desktop Mini Security/Dual VESA Sleeve v2 to securely mount it—with or without an Expansion Module¹—behind your display, position the solution on a wall, and lock it down with the integrated security bracket and optional HP Ultra-Slim Cable Lock. Offering the perfect combination of performance, reliability and investment protection to any IT environment. For businesses that require superior stability and manageability with low lifecycle costs, or desktops with proven technology, superior price/performance and a wide choice of features, or even entry-level PCs that balance price and essential computing capabilities – the HP Desktop family holds the solution.

Product number: 2JA32AA

HP 5 year Next Business Day Onsite Hardware Support for Desktops



Receive 5 years of next business day onsite HW Support from an HP-qualified technician for your computing device, if the issue cannot be solved remotely.

Product number: U7899E

HP EliteDesk 705 G4 Small Form Factor PC

Messaging Footnotes

- ¹ Not all features are available in all editions or versions of Windows. Systems may require upgraded and/or separately purchased hardware, drivers, software or BIOS update to take full advantage of Windows functionality. Windows 10 is automatically updated, which is always enabled. ISP fees may apply and additional requirements may apply over time for updates. See <http://www.windows.com>.
- ² HP Sure Start Gen4 is available on HP Elite and HP Pro 600 products equipped with 8th generation Intel® or AMD processors.
- ³ Multi-core is designed to improve performance of certain software products. Not all customers or software applications will necessarily benefit from use of this technology. Performance and clock frequency will vary depending on application workload and your hardware and software configurations. AMD's numbering is not a measurement of clock speed.
- ⁴ Sold separately or as an optional feature.
- ⁵ HP Manageability Integration Kit can be downloaded from <http://www8.hp.com/us/en/ads/clientmanagement/overview.html>.
- ⁶ HP Total Test Process testing is not a guarantee of future performance under these test conditions. Accidental damage requires an optional HP Accidental Damage Protection Care Pack.
- ⁷ MIL-STD testing is pending and is not intended to demonstrate fitness for U.S. Department of Defense contract requirements or for military use. Test results are not a guarantee of future performance under these test conditions. Damage under the MIL STD test conditions or any accidental damage requires an optional HP Accidental Damage Protection Care Pack.
- ⁸ HP Sure Run is available on HP Elite products equipped with 8th generation Intel® or AMD processors.
- ⁹ HP Sure Click is available on most HP PCs and supports Microsoft® Internet Explorer and Chromium™. Supported attachments include Microsoft Office (Word, Excel, PowerPoint) and PDF files in read only mode, when Microsoft Office or Adobe Acrobat are installed.
- ¹⁰ HP Sure Recover is available on HP Elite PCs with 8th generation Intel® or AMD processors and requires an open, wired network connection. Not available on platforms with multiple internal storage drives or Intel® Optane™. You must back up important files, data, photos, videos, etc. before using HP Sure Recover to avoid loss of data.
- ¹¹ HP Client Security Manager Gen4 requires Windows and Intel® or AMD 8th Gen processors.

Technical Specifications Footnotes

- ¹ Not all features are available in all editions or versions of Windows. Systems may require upgraded and/or separately purchased hardware, drivers, software or BIOS update to take full advantage of Windows functionality. Windows 10 is automatically updated, which is always enabled. ISP fees may apply and additional requirements may apply over time for updates. See <http://www.windows.com/>.
- ³ Multi-core is designed to improve performance of certain software products. Not all customers or software applications will necessarily benefit from use of this technology. Performance and clock frequency will vary depending on application workload and your hardware and software configurations. AMD's numbering is not a measurement of clock speed.
- ⁴ Native Miracast Support: is a wireless technology your PC can use to project your screen to TVs, projectors, and streaming.
- ⁵ HP Driver Packs: not preinstalled, however available for download at <http://www.hp.com/go/clientmanagement>
- ⁶ HP BIOSphere: HP BIOSphere Gen4 requires Intel® or AMD 8th Gen processors. Features may vary depending on the platform and configurations.
- ⁷ For hard drives and solid state drives, GB = 1 billion bytes. TB = 1 trillion bytes. Actual formatted capacity is less. Up to 36 GB (for Windows 10) of system disk is reserved for the system recovery software.
- ⁸ NOTE: Your product does not support Windows 8 or Windows 7. In accordance with Microsoft's support policy, HP does not support the Windows 8 or Windows 7 operating system on products configured with Intel® and AMD 7th generation and forward processors or provide any Windows 8 or Windows 7 drivers on <http://www.support.hp.com>
- ⁹ Based on US EPEAT® registration according to IEEE 1680.1-2018 EPEAT®. Status varies by country. Visit www.epeat.net for more information.
- ¹⁰ External power supplies, power cords, cables and peripherals are not low halogen. Service parts obtained after purchase may not be low halogen.
- ¹¹ Sold separately or as an optional feature.
- ¹² Two 2.5" HDD: SFF can be configured with either (1) 3.5" or (2) 2.5" internal storage drive (2.5 inch drive needs adapter).
- ¹⁴ USB Antimicrobial Mouse: Not available in all regions; HP USB Hardened Mouse: Not available in all regions.
- ¹⁵ HP Secure Erase: for the methods outlined in the National Institute of Standards and Technology Special Publication 800-88 "Clear" sanitation method.
- ¹⁶ Absolute Persistence module: Absolute agent is shipped turned off, and will be activated when customers activate a purchased subscription. Subscriptions can be purchased for terms ranging multiple years. Service is limited, check with Absolute for availability outside the U.S. The Absolute Recovery Guarantee is a limited warranty. Certain conditions apply. For full details visit: <http://www.absolute.com/company/legal/agreements/computrace-agreement>. Data Delete is an optional service provided by Absolute Software. If utilized, the Recovery Guarantee is null and void. In order to use the Data Delete service, customers must first sign a Pre-Authorization Agreement and either obtain a PIN or purchase one or more RSA SecurID tokens from Absolute Software.
- ¹⁸ HP Support Assistant: requires Windows and Internet access.
- ¹⁹ Windows Defender: Windows Defender Opt In, Windows 10, and internet connection required for updates.
- ²¹ HP Sure Recover: is available on HP Elite PCs with 8th generation Intel® or AMD processors and requires an open, wired network connection. Not available on platforms with multiple internal storage drives, Intel® Optane™. You must back up important files, data, photos, videos, etc. before use to avoid loss of data.
- ²² HP Management Integration Kit for Microsoft System Center Configuration Management Gen 2: HP Manageability Integration Kit can be downloaded from <http://www8.hp.com/us/en/ads/clientmanagement/overview.html>
- ²³ Ivanti Management Suite: subscription required.
- ²⁴ HP Client Security Suite Gen 4: requires Windows and Intel® or AMD 8th generation processors.
- ²⁵ HP Password Manager: requires Internet Explorer or Chrome or FireFox. Some websites and applications may not be supported. User may need to enable or allow the add-on / extension in the internet browser.
- ²⁶ HP Sure Start Gen 4: is available on HP Elite and HP Pro 600 products equipped with 8th generation Intel® or AMD processors.
- ²⁷ Trusted Platform Module TPM 2.0 Embedded Security Chip shipped with Windows 10 (Common Criteria EAL4+ Certified)(FIPS 140-2 Level 2 Certified): Firmware TPM is version 2.0. Hardware TPM is v1.2, which is a subset of the TPM 2.0 specification version v0.89 as implemented by Intel Platform Trust Technology (PTT).
- ²⁸ RAID configurations: is optional and does require a second hard drive.
- ²⁹ HP Sure Run: is available on HP Elite products equipped with 8th generation Intel® or AMD processors.
- ³⁰ HD-DVD disks cannot be played on this drive. No support for DVD-RAM. Actual speeds may vary. Don't copy copyright-protected materials. Double Layer discs can store more data than single layer discs. Discs burned with this drive may not be compatible with many existing single-layer DVD drives and players.
- ³¹ HP Drive Lock is not supported on NVMe drives.
- ³² AMD Ryzen™ PRO CPU requires discrete graphic card attached.

Sign up for updates hp.com/go/getupdated

© Copyright 2019 HP Development Company, L.P. The information contained herein is subject to change without notice. The only warranties for HP products and services are set forth in the express warranty statements accompanying such products and services. Nothing herein should be construed as constituting an additional warranty. HP shall not be liable for technical or editorial errors or omissions contained herein.

Bluetooth is a trademark of its proprietor and used by HP Inc. under license. Microsoft, Windows, and the Windows Logo are trademarks or registered trademarks of Microsoft Corporation in the U.S. and other countries. USB Type-C™ and USB-C™ are trademarks of USB Implementers Forum. DisplayPort™ and the DisplayPort™ logo are trademarks owned by the Video Electronics Standards Association (VESA®) in the United States and other countries. All other trademarks are the property of their respective owners.

4AA7-3223, June 2019

