

NielsenIQ Brandbank

Coffee Mate The Original 550g



EAN

8445290856296

Target market(s)

GB, IE

Components

Ingredients

Glucose Syrup

Palm Kernel Oil

MILK Proteins

Stabilisers (E331, E452)

Acidity Regulator (E340)

Emulsifiers (E471, E472e)

Anti-Caking Agent (E170)

Colour (Riboflavin)

Nutrition

	Per 100ml**	Per mug**	% RI*
Energy	77kJ	157kJ	
	19kcal	38kcal	2%
Fat	1.1g	2.2g	3%
of which: saturates	0.8g	1.7g	9%
Carbohydrate	1.9g	3.8g	1%
of which: sugars	0.3g	0.7g	1%
Fibre	0.3g	0.6g	-
Protein	0.1g	0.3g	<1%
Salt	0.03g	0.06g	1%

*Reference Intake of an average adult (8400kJ/2000kcal)

**One mug (2 heaped tsp (6.5g) Coffee-Mate® + 1 tsp (1.8g) soluble coffee + 200ml water); used as basis for per 100ml

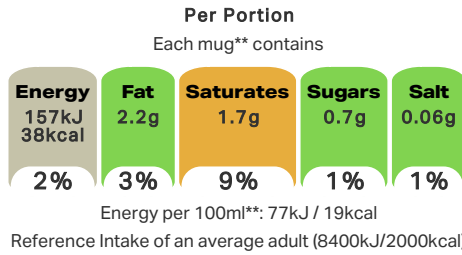
Makes 84 mugs

Calculated Nutrition

	Per 100ml	Per mug
Energy (kJ)	77	157
Energy (kcal)	19	38
Fat (g)	1.1	2.2
of which saturates (g)	0.8	1.7
Carbohydrate (g)	1.9	3.8

of which sugars (g)	0.3	0.7
Fibre (g)	0.3	0.6
Protein (g)	0.1	0.3
Salt (g)	0.03	0.06

Front of Pack Nutrition



**One mug (2 heaped tsp (6.5g) Coffee-Mate® + 1 tsp (1.8g) soluble coffee + 200ml water); used as basis for per 100ml

Nutrition Other Text

Reference Intake of an average adult (8400kJ/2000kcal)

One mug (2 heaped tsp (6.5g) Coffee-Mate® + 1 tsp (1.8g) soluble coffee + 200ml water); used as basis for per 100ml

Makes 84 mugs

Reference Intake Statement

Reference Intake Statement - Reference Intake of an average adult (8400kJ/2000kcal)

HFSS Indicator

HFSS Indicator - Not HFSS

Product Description

Alternative Description

Supplier Preferred Product Name - Coffee Mate Original Coffee Whitener 550g

Brand

Coffee Mate

Manufacturer Brand

Brand - Nestlé

Features

Smooth & creamy taste
Classic for a reason
Low fat & sugar when prepared
Suitable for Vegetarians

Standardised Brand

Brand - Coffee Mate

Regulated Product Name

Whitener for hot beverages.

Marketing

Company Name

Nestlé UK / Nestlé Ireland

Company Address

Nestlé UK,
PO Box 207,
York,
YO91 1XY.

Nestlé Ireland,
3030 Lake Drive,
Citywest,
Dublin 24.

Product Marketing

Classic for a Reason.

Brand Marketing

Coffee Mate takes your coffee to the next level of rich deliciousness that makes every mug taste creamier than you ever dreamed.

Other Information

© Reg. Trademark of Society des Produits Nestlé S.A.

Further Description

Past my date?
Look, smell, taste
Don't waste

Nutritional Claims

Low fat & sugar when prepared

Health & Lifestyle

Lifestyle

- Low Fat
- Suitable for Vegetarians

Allergy Advice

Milk - Contains

Storage & Usage

Storage Type

Type

Ambient

Preparation and Usage

1 Add 2 heaped teaspoons** to your coffee.

2 Stir and enjoy its smooth, silky taste.

**One mug (2 heaped tsp (6.5g) Coffee-Mate® + 1 tsp (1.8g) soluble coffee + 200ml water); used as basis for per 100ml.

Storage

Best before end see base

After opening, store in a cool, dry place. To enjoy the product at its best, consume within 2 months.

Durability after Opening

Consume Within - Months

2

Date Marking Type

- Best Before

Brandbank Captured Pack Data

Pack Size

550g e

Numeric Size

Numeric Size - 550

Recycling Info

Can - Recycle
Cap - Recycle
Foil - Recycle

Pack Type

Type - Can

Recycling Scheme

- OPRL

Recycling Other Text

Dispose of Responsibly
Please Recycle Me

Usage Count

Number of uses - Servings

84

Usage Other Text

Makes 84 mugs

Customer Supplied Pack Data

Supplied Dimension

Shelf Height (mm) (mm)	Shelf Width (mm) (mm)	Shelf Depth (mm) (mm)
148	99	99

(GS1 package measurement rules)

Supplied Weight

Gross Weight (g) - 599

Supplied Unit Merchandising

Height - 148
Width - 99
Depth - 99
Unit Stable - Yes
Unit Stackable - Yes
Merchandise Multiple Ways - No

Supplied Shelf Ready Pack

Unit Count - 6

Supplied Case

Height - 150
Width - 214
Depth - 321
Weight - 3630
Unit Count - 6
GTIN - 08445290856289

Customer Services

Manufacturers Address

Nestlé UK,
PO Box 207,
York,
YO91 1XY.

Nestlé Ireland,
3030 Lake Drive,
Citywest,
Dublin 24.

Return To

Contact Us Free
UK 0800 58 57 59
ROI 00800 6378 5385
www.nestle.co.uk
Nestlé UK,
PO Box 207,
York,
YO91 1XY.

Nestlé Ireland,
3030 Lake Drive,
Citywest,
Dublin 24.

Telephone Helpline

UK 0800 58 57 59
ROI 00800 6378 5385

Web Address

www.nestle.co.uk

Extended Data

Description Breakdown

Functional Name - Whitener for hot beverages
Variant - The Original

Packaging Weight

Tub - Grams

598.5

Hand Separable

Hand Separable - True



COFFEE-MATE ORIGINAL 6X550G

Product Name	COFFEE-MATE ORIGINAL 6X550G
Line Code	12561935
Product Description	Whitener for hot beverage

Ingredient Listing

Glucose syrup, palm kernel oil, **MILK** proteins, stabilisers (E331, E452), acidity regulator (E340), emulsifiers (E471, E472e), anti-caking agent (E170), colour: riboflavin.

Nutrition

Portion Size		Energy kJ	Energy Kcal	Fat	Fat of which saturates	Carbohydrate	Carbohydrate of which sugars	Fibre	Protein	Salt
% RI*	%	2		3	9	1	1		<1	1
Per Serving**	G	157	38	2.2	1.7	3.8	0.7	0.6	0.3	0.06
Per 100ml Prepared**	G	77	19	1.1	0.8	1.9	0.3	0.3	0.1	0.03
Per 100g	G	2267	543	33.9	25.5	57.5	9.2	0.0	1.7	0.88

*Reference Intake of an average adult (8400kJ/2000kcal).

Product Information

Number Of Servings Per Pack	Makes 84 mugs**
Serving Size	**One mug (2 heaped tsp (6.5g) COFFEE-MATE® + 1 tsp (1.8g) soluble coffee + 200ml water); used as basis for per 100ml.
Serving Suggestion	
Storage Instructions	Store in a cool, dry place.
Storage Instructions Once Open	After opening, store in a cool, dry place. To enjoy the product at its best, consume within 2 months.
Shelf Life	12 months

Allergen and Intolerance Information

Constituents	Presence Contains/May contain/Free from, according to GS1 definition
Peanuts and Products Thereof	Free From
Other Nuts and Products Thereof	Free From
Molluscs and Products Thereof	Free From
Crustaceans and Products Thereof	Free From
Fish And Products Thereof	Free From
Eggs And Products Thereof	Free From
Milk And Products Thereof Including Lactose	Contains
Soybeans And Products Thereof	Free From
Cereals Containing Gluten And Products Thereof	Free From
Celery And Products Thereof	Free From
Sesame Seeds And Products Thereof	Free From
Mustard And Products Thereof	Free From
Lupin And Derivatives Thereof	Free From
Sulphur Dioxide / Sulphites At Concentrations More Than 10mg/kg	Free From

Dietary Information

Suitable For A Vegetarian	Yes	Suitable For Halal	
Suitable For A Vegan	No	Suitable For Kosher	
Suitable For A Coeliac Diet	Yes		

Preparation Instructions

Add two heaped teaspoons** to your coffee.
Stir and enjoy its smooth, silky taste.

On Pack Claims

Suitable for vegetarians.
Smooth & creamy taste.
Low fat & sugar free when prepared.
COFFEE MATE takes your coffee to the next level of RICH DELICIOUSNESS that makes every mug taste creamier THAN YOU EVER DREAMED.

Packaging and Palletisation

Consumer Unit (each)		Traded Unit (case)		Pallet Details	
EAN - Unit Bar Code	8445290856296	ITF - Traded Unit Bar code	8445290856289	EA per Case	6
Width (mm)	99	Width (mm)	214	EA per Layer	96
Length (mm)	99	Length (mm)	321	EA per Pallet	480
Height (mm)	212	Height (mm)	212	Cases Per Layer	16
Net Weight (g)	550	Net Case Weight (Kg)	3.3	Layers Per Pallet	80
Gross Weight (g)	874	Gross CaseWeight (Kg)	5.245	Cases Per Pallet	5
				Pallet Height (mm)	1223

Additional Information:

Nestlé UK Ltd reserves the right to develop our products based on our Product Review Programme, the label attached to the product will reflect such changes as they occur.

Nestlé UK Ltd warrants this product to comply with the Food Safety Act 1990 and all relevant law from time to time in force.