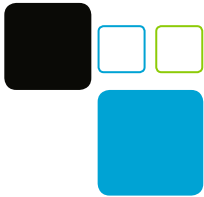
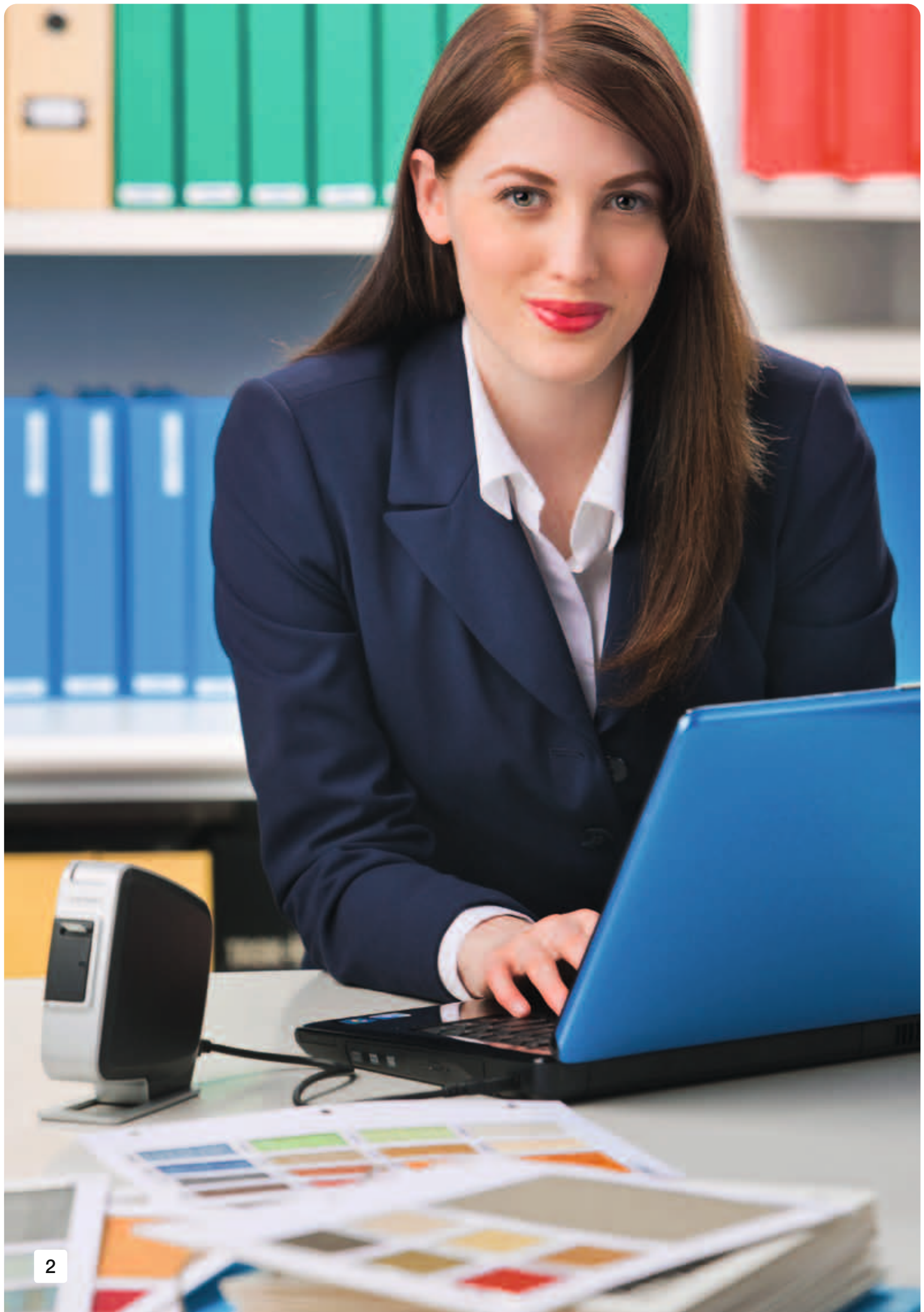


DYMO[®]

practically genius

Choose your **LabelManager**[™] label maker
and get down to business.





Whether you label a little, or a lot. We've got a label maker that is right for you.

Choose the LabelManager™ label maker that's right for you – and see just how quickly and easily you can organise the busiest office, small business or warehouse.

1 Choose your usage level



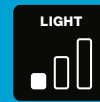
Heavy use

Labelling is part of your job – you're responsible for labelling warehouse inventory, massive files or archives, and other high-volume labelling jobs.



Moderate use

You want to keep your busy office or workplace more organised, efficient and professional by labelling storage areas, files, equipment and supplies.



Light use

You regularly use labels for presentations, mailings or other projects – and want to replace handwritten labels with clear, impressive printed labels.

2 Choose your location



On the go

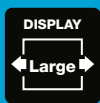
You never know when you're going to need to create labels – so you want a label maker that goes wherever you go.



At your desk

You do most of your labelling at your desk and appreciate a larger, computer-style keyboard.

3 Choose your special features



Large display

See more characters and more lines of text, without scrolling – so it's easier to check your work before you print.



Rechargeable lithium-ion battery

Label without the expense, inconvenience and waste of disposable batteries.



PC or Mac® connectivity

Design labels using the fonts and graphics on your computer – even print batches of labels from spreadsheet or database files.



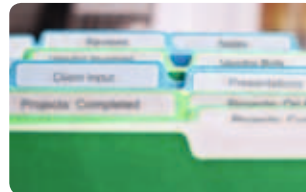
Maximize productivity with LabelManager™ label makers.

Reliable, easy-to-use and innovative, DYMO® LabelManager™ label makers are the right choice for professionals who demand optimal labelling performance every single day.

1

Massive filing and archiving

Don't rely on hard-to-read handwriting – print crystal-clear labels for folders, binders, drawers and cabinets. And choose from a variety of colors for instant color-code identification.



2

Warehousing

Label packages, shelves, parts and more with easy-to-read text labels and scannable barcodes. DYMO® labels are temperature and UV resistant and will stay stuck under demanding warehouse conditions.



3

Workflow management

Label paper trays, workstations and other items to specify workflows and processes – and prevent mistakes. Even label office equipment with step-by-step instructions and barcodes.



LabelManager™ 420P

High-Performance Portable Label Maker with PC or Mac® Connection

LabelManager™ 450D

High-Performance Desktop Label Maker with PC or Mac® Connection



Your team is working harder, faster, smarter. Choose the label maker that's built to keep up.

The DYMO® LabelManager™ 420P label maker is the right choice for anyone who depends on labels to create a more efficient and productive workplace. Connect it to your PC¹ or Mac² and use DYMO Label™ Software to design labels on your computer screen, with barcodes, logos or graphics – or to print batches of labels from text in spreadsheet or database files. Disconnected from your computer, the LabelManager™ 420P label maker is a portable labelling powerhouse – with an easy-to-use interface, quick access keys and plenty of fonts and text effects.

LabelManager™ 420P Features

- Large 4-line backlit display – shows text effects on screen before you print
- 8 fonts, 7 font sizes, 10 text styles, 8 boxes plus underline
- Powered by a rechargeable lithium-ion battery – no more disposable AA battery expense and inconvenience
- Uses DYMO® D1 labels in 6 mm, 9 mm, 12 mm and 19 mm widths



With or without your computer, customise, create and take labelling to the next level.

The LabelManager™ 450D gives you more ways than ever to add impact to your labels. By itself, it's a professional label maker with dozens of label printing options. Connect it to your PC¹ or Mac² and watch the DYMO® software open up a new world of labelling possibilities like importing barcodes and logos and multiple typefaces for hundreds of extended applications.

LabelManager™ 450D Features

- Large semi-graphical integral display with print preview for viewing and editing labels
- 7 fonts, 5 font sizes, 13 text styles, 6 boxes, several background patterns and 6 types of barcodes
- Prints up to 5 lines of text (on 19 and 24mm labels)
- Runs on 6 AA batteries (not included) or optional AC adaptor (included)
- Uses DYMO® D1 labels in 6 mm, 9 mm, 12 mm, 19 mm and 24 mm widths



¹ Windows® XP, Windows Vista®, Windows® 7, ² Mac OS® v10.4 or later



Keep any office organised, efficient and under control.

Mid-range DYMO® LabelManager™ label makers let you bring instant order to the busiest office or workplace – so everyone spends less time looking for stuff, and more time focused on their work.

1 Extensive filing

Label file folders, cabinets and drawers with neat, easy-to-read labels – your files will stay organised, and everyone will find files faster.



2 Organisation

Find anything faster when you know where to look! Label closets, shelves, baskets and other storage areas to make sure everything is stored where it belongs.



3 Asset management

Prevent confusion, loss, and 'unauthorized borrowing' – label supplies with information for identification and tracking.



LabelManager™ PnP

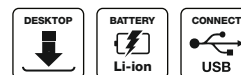
Plug and Play Label Maker for PC or Mac®

Just plug, type and print – it's that easy!

Finally, printing a label is fast and easy! With the LabelManager™ PnP label maker there's no software to install – just plug it into your PC¹ or Mac², and you're ready to create great-looking labels as fast as you can type! Plus you can customise your labels using the fonts and graphics on your computer. The lightweight, compact LabelManager™ PnP label maker is ideal for labelling at your desk – and it runs on a lithium-ion battery that recharges over the USB connection.

LabelManager PnP Features

- No software to install – built-in software pops up on your computer screen
- Ready to use Lithium-ion battery recharges via USB connection – no power adapter or AA batteries needed
- Customise your label with any fonts or graphics on your computer
- Uses DYMO® D1 labels in 6 mm, 9 mm and 12 mm widths



LabelManager™ 260P

Portable and Rechargeable Label Maker



Uninterrupted labelling power whenever you need it, with no more AA batteries.

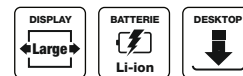
The DYMO® LabelManager™ 260P label maker is powered by a rechargeable lithium-ion battery so you can charge and go unlike an AC adaptor.

LabelManager™ 260P Features

- Customise labels and add emphasis by choosing from 3 font styles, 6 font sizes, 7 text styles and 8 box styles or underline
- Quick access keys to punctuation, diacriticals, currency and symbols
- Compact keyboard for easy handling
- Powered by a rechargeable lithium-ion battery – no more disposable battery expense or inconvenience
- Uses DYMO® D1 labels in 6 mm, 9 mm and 12 mm widths

LabelManager™ 360D

Rechargeable Desktop Label Maker



More power. More features. No more AA batteries.

The DYMO LabelManager™ 360D has a computer style keyboard that speeds text entry. Plus it is powered by a rechargeable lithium-ion battery so you can charge and go unlike an AC adaptor.

LabelManager™ 360D Features

- Customise labels and add emphasis by choosing from 3 font styles, 7 font styles, 7 text styles and 8 box styles or underline
- Quick access keys to punctuation, diacriticals, currency and symbols
- Computer style keyboard speeds text entry
- Powered by a rechargeable lithium-ion battery – no more disposable battery expense or inconvenience
- Uses DYMO® D1 labels in 6 mm, 9 mm, 12 mm and 19 mm widths

¹ Windows® XP, Windows Vista®, Windows® 7, ² Mac OS® v10.5 or later

Portable labelling at your fingertips.

Introduce yourself and your office to the benefits of labelling – with basic DYMO® LabelManager™ models that fit even the tightest budget.



LabelManager™ 120P

Basic Label Maker with One-Touch Smart Keys

Smart keys with one-touch formatting

Easy to use, this basic portable label maker features quick access to functions you'll use most. You'll not only speed through a range of labelling tasks, you'll get them done accurately the first time, thanks to the graphical display that previews your label before you print.

LabelManager™ 120P Features

- 2 font sizes, 3 text styles and 1 box style
- Auto-off power saver to extend battery life
- Last label memory saves you time
- Runs on 6 AA batteries (not included)
- Uses DYMO® D1 labels in 9 mm and 12 mm



LabelManager™ 220P

Portable Label Maker with PDA-Style Keyboard

Unique keyboard like your favourite PDA.

If you like using your PDA, you'll love the keyboard layout of the LabelManager™ 220P. And you'll love the results you get with this popular portable label maker.

LabelManager™ 220P Features

- Computer-style keyboard with PDA-style layout for easy text entry
- Large graphical display shows text effects on screen before you print
- 6 font sizes, 7 text styles and 8 box styles
- 9-label memory and save text feature
- Print 1 or 2 lines per label (on 9 or 12mm width labels)
- Runs on 6 AA batteries (not included) or optional AC adaptor (not included)
- Uses DYMO® D1 labels in 6 mm, 9 mm and 12 mm



LabelManager™ 210D

All-Purpose Label Maker with Large Graphical Display

Large screen for easy and quick labelling.

With such a smart user interface, this compact label maker belongs on every desk, especially yours. So versatile, it not only provides a logical labelling flow, it handles all sorts of labelling tasks professionally and quickly.

LabelManager™ 210D Features

- Quick access buttons to punctuation, currency symbols and diacriticals
- Prints 1 or 2 lines per label (on 9 mm and 12 mm)
- Right, center or left alignment
- Stores up to 9 labels and offers the possibility to insert saved text
- Runs on 6 AA batteries (not included) or optional AC adaptor (not included)
- Uses DYMO® D1 labels in 6 mm, 9 mm and 12 mm





DYMO® D1 Label Guide

Created specifically for your LabelManager™ label maker, D1 labels offer the performance and variety you need for any labelling job – indoor or outdoor, in your office, your workshop, your store or anywhere else you work. All DYMO® D1 labels have an “Easy Peel” back-slit for trouble-free application.



Water Resistant
Withstands water, oils, greases and most milder solvents



Temperature
Can withstand temperatures from -18°C to 90°C



Removable
Labels can be removed without leaving adhesive residue (Standard and Flexible labels only)



Easy Peel
Remove backing easily for quick and simple application



UV Resistant
Withstands exposure to sunlight without fading or peeling



Standard Polyester

For hundreds of tasks around the office or home office, such as filing, storage and asset management. Available in 6 mm, 9 mm, 12 mm, 19 mm and 24 mm x 7 m

	ABC	ABC	ABC	ABC	ABC	ABC
6 mm	S0720780	-	S0720790	-	-	-
9 mm	S0720680	S0720700	S0720730	S0720720	S0720710	S0720740
12 mm	S0720530	S0720550	S0720580	S0720570	S0720560	S0720590
19 mm	S0720830	S0720850	S0720880	S0720870	S0720860	S0720890
24 mm	S0720930	S0720950	S0720980	S0720970	S0720960	S0720990

	ABC	ABC	ABC	ABC	ABC	ABC
6 mm	S0720770	-	-	-	-	-
9 mm	S0720670	-	S0720690	-	-	-
12 mm	S0720500	S0720520	S0720540	S0720610	S0720600	S0720510
19 mm	S0720820	-	S0720840	S0720910	S0720900	-
24 mm	S0720920	-	S0720940	S0721010	S0721000	-



Permanent Polyester

For surfaces that demand a permanent solution. Available in 12 mm and 19 mm x 5,5 m

	ABC
12 mm	S0718060
19 mm	S0718070



Flexible Nylon

For curved or heavily textured surfaces. Available in 12 mm and 19 mm x 5,5 m

	ABC
12 mm	S0718040
19 mm	S0718050

LabelManager™ Product Overview



LabelManager™
420P



LabelManager™
450D



LabelManager™
PnP

PRINTING	Resolution	180 dpi		180 dpi		180 dpi
	Number of print lines	4		5 (on 24mm)		Variable
	Tape widths	6 9 12 19 mm		6 9 12 19 24 mm		6 9 12 mm
STYLES & EFFECTS	Number of styles	10	Windows/ Mac fonts	13	Windows/ Mac fonts	Windows/Mac fonts
	Normal	✓		✓		
	Bold (Wide)	✓		✓		
	Vertical	✓		✓		
	Outline	✓		✓		
	Shadow	✓		✓		
	Italic	✓		✓		
	3D	✓		✓		
	Strikethrough	✓		✓		
	Mirror	✓		✓		
	Box	✓		✓		
	Underline	✓		✓		
	Background pattern	✓		✓		
	Number of char. sizes	7		5		
FONTS & SYMBOLS KEYBOARD MEMORY	Number of fonts	8	7			
	Number of symbols	325	175			
	Layout	ABC		Qwerty/Qwertz/Azerty		-
	Last label	✓	✓	✓	✓	
	Label memory	9	10	-	-	
	Personal preferences	-	10	-	-	
SPECIFIC OPTIONS	Fixed length	✓	✓	✓	✓	
	Multiple copies max	10	16	49		
	Incremental printing	✓	✓	✓		
	Alignment	✓	✓	✓		
	Mixed formats	-	3	✓		
	Barcode	✓	✓	✓		
TYPE CUTTER POWER	Manual/Automatic	Manual	Automatic	Manual		
	Low battery indicator	✓	✓	✓		
COMPUTER COMPATABILITY	Number of batteries	-	6	-		
	Battery type	Li-ion	AA	Li-ion		
	Charging adaptor	✓	-	Charges via USB		
	Power adaptor	-	✓	-		
	Automatically turns off	✓	✓	✓		
	PC and Mac®	PC and Mac®	PC and Mac®	PC and Mac®		



LabelManager™
260P



LabelManager™
360D



LabelManager™
220P

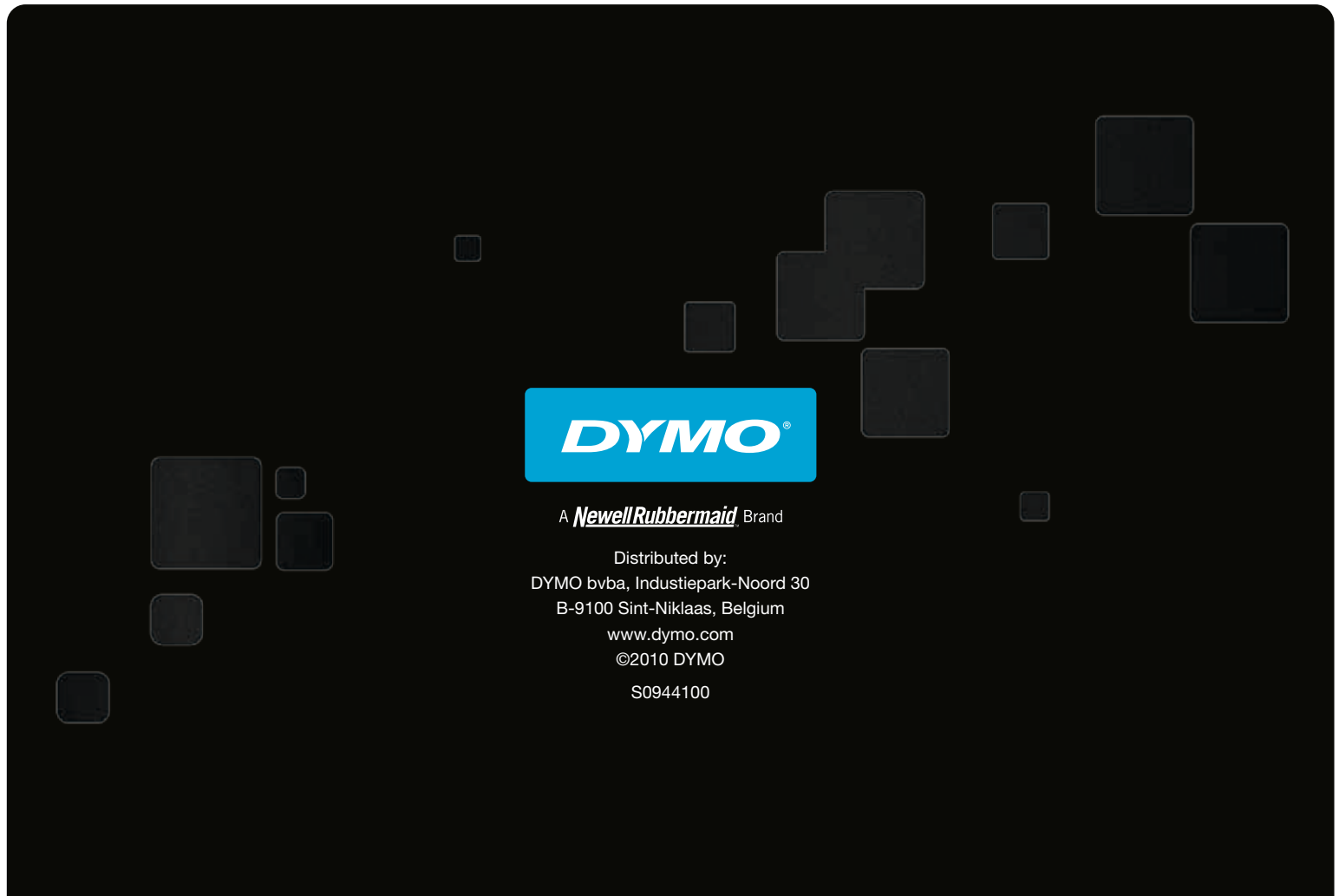
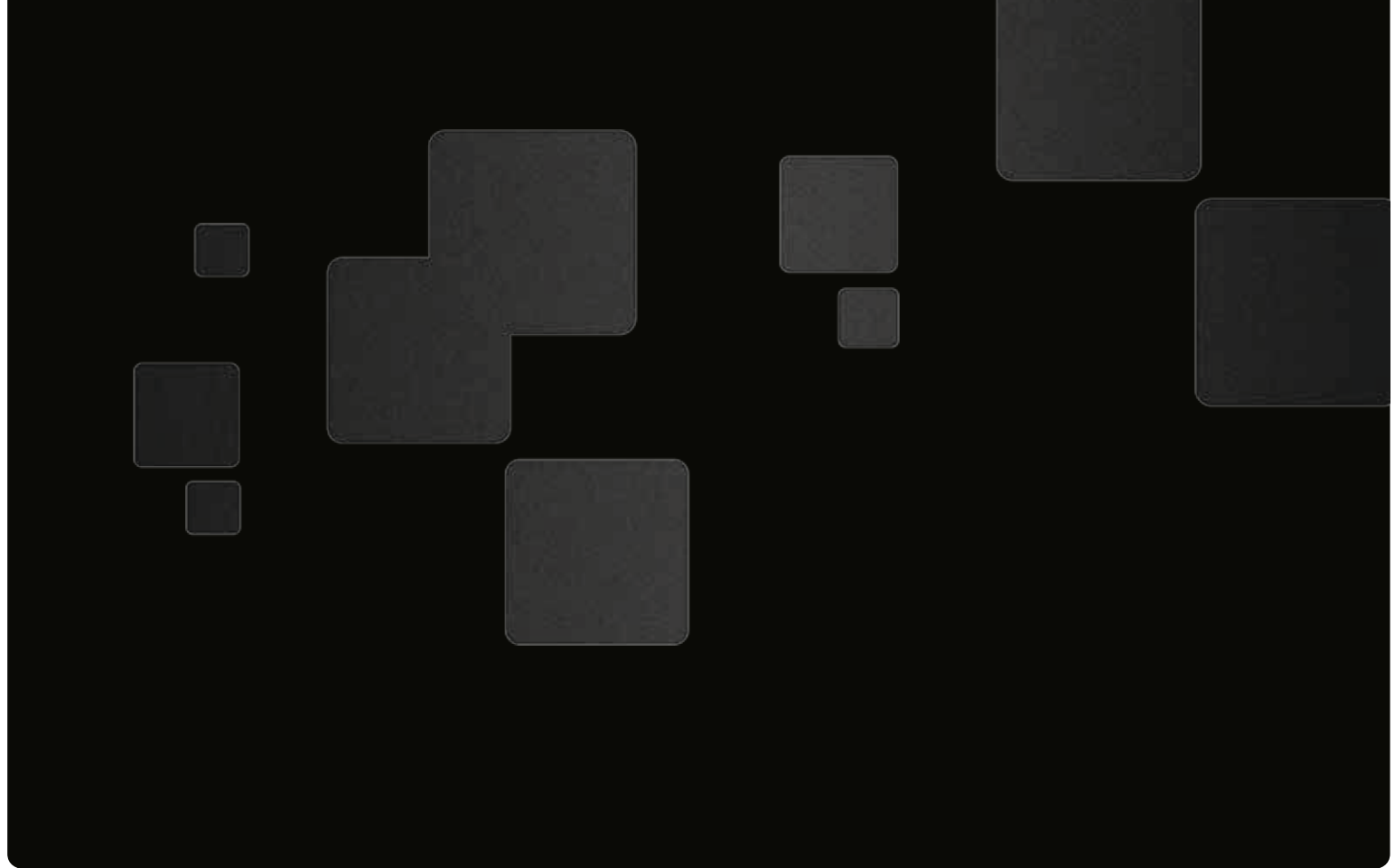


LabelManager™
120P



LabelManager™
210D

180 dpi	180 dpi	180 dpi	180 dpi	180 dpi
2	2	2	1	2
6 9 12 mm	6 9 12 19 mm	6 9 12 mm	9 12 mm	6 9 12 mm
7	7	7	3	7
✓	✓	✓	✓	✓
✓	✓	✓	✓	✓
✓	✓	✓	✓	✓
✓	✓	✓	-	✓
✓	✓	✓	-	✓
✓	✓	✓	-	✓
✓	✓	-	-	-
✓	✓	-	-	-
✓	✓	✓	-	✓
✓	✓	✓	✓	✓
-	-	-	-	-
6	7	6	2	6
3	3	1	1	1
221	221	132	62	132
ABC	Qwerty/Qwertz/Azerty	Qwerty/Qwertz/Azerty	ABC	Qwerty/Qwertz/Azerty
✓	✓	✓	✓	✓
9	9	9	-	9
-	-	-	-	-
✓	✓	✓	-	✓
10	10	10	-	10
✓	✓	-	-	-
✓	✓	✓	-	✓
-	-	-	-	-
-	-	-	-	-
Manual	Manual	Manual	Manual	Manual
✓	✓	✓	✓	✓
-	-	6	6	6
Li-ion	Li-ion	AA	AA	AA
✓	✓	-	-	-
-	-	✓	-	✓
✓	✓	✓	✓	✓
-	-	-	-	-



A *NewellRubbermaid* Brand

Distributed by:
DYMO bvba, Industiepark-Noord 30
B-9100 Sint-Niklaas, Belgium
www.dymo.com
©2010 DYMO
S0944100