

Cadbury Highlights Milk Hot Chocolate 11g



EAN

96033197

Target market(s)

GB, IE

Components

Ingredients

Fat-Reduced Cocoa Powder (34 %)

Whey Powder (from **Milk**)

Soluble Maize Fibre

Skimmed **Milk** Powder

Inulin

Milk Chocolate (3.5 %) (**Milk**, Sugar, Cocoa Mass, Cocoa Butter, Vegetable Fats (Palm, Shea), Emulsifier (E442), Flavourings)

Glucose Syrup

Palm Oil

Salt

Anti-Caking Agent (E551)

Thickener (E407)

Acidity Regulator (Potassium Carbonates)

Milk Protein

Flavouring

Sweeteners (E950, Sucralose)

Emulsifier (E471)

Sugar

Nutrition

	Per 100 g:	Per serving (11 g + 200 ml water):	*% RI Per Serving (11 g + 200 ml water):
Energy	1460 kJ (349 kcal)	161 kJ (38 kcal)	2 %
Fat	9.1 g	1.0 g	1 %
of which saturates	6.0 g	0.7 g	3 %
Carbohydrate	35 g	3.9 g	
of which sugars	25 g	2.7 g	3 %
Fibre	29 g	3.2 g	
Protein	16 g	1.8 g	
Salt	2.2 g	0.24 g	4 %

*Reference intake of an average adult (8400 kJ / 2000 kcal)

Calculated Nutrition

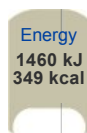
	per 100g	Per serving (11 g + 200 ml water):
Energy (kJ)	1460	161
Energy (kcal)	349	38
Fat (g)	9.1	1
of which saturates (g)	6	0.7
Carbohydrate (g)	35	3.9
of which sugars (g)	25	2.7
Fibre (g)	29	3.2
Protein (g)	16	1.8
Salt (g)	2.2	0.24

Front of Pack Nutrition

Per Portion
Per 11 g + 200 ml



Per 100g/ml
Per 100 g



Reference intake of an average adult (8400 kJ / 2000 kcal)

Product Description

Brand

Cadbury

Features

Improved Flavour
Stir in hot water
Suitable for vegetarians

Standardised Brand

Brand - Cadbury

Regulated Product Name

Instant low calorie milk chocolate flavour hot chocolate drink with sugars and sweeteners.

Marketing

Company Name

Mondelez UK / Mondelez Ireland

Company Address

Mondelez UK,
PO Box 7008,
Birmingham,
B30 2PT.

Mondelez Ireland,
Malahide Road,
Coolock,
Dublin 5.

Third Party Logos

- Green Dot

Product Marketing

38 kcal Low sugar†
† <2.5 g sugar per 100 ml of the prepared drink.

Further Description

Cocoa Life
Partnering with Fairtrade Foundation
cocoalife.org

Health & Lifestyle

Lifestyle

- Suitable for Vegetarians

Allergy Advice

Milk - Contains

Additives

Sweeteners - Contains

Storage & Usage

Storage Type

Type

Ambient

Preparation and Usage

Preparation Instructions

(with 200 ml hot water):

For the perfect Cadbury Highlights empty one sachet of Cadbury Highlights into a cup or mug, add hot water and stir well.

Storage

Store in a dry place. Protect from heat. For best before date see flap.

Brandbank Captured Pack Data

Pack Size

11g e

Numeric Size

Numeric Size - 11

Pack Type

Type - Wrap

Customer Services

Manufacturers Address

Mondelez UK,
PO Box 7008,
Birmingham,
B30 2PT.

Mondelez Ireland,
Malahide Road,
Coolock,
Dublin 5.

Return To

We are passionate about our great quality Cadbury products. Not completely satisfied? Please contact us:
Freephone 0800 818181 (UK only).

Mondelez UK,
PO Box 7008,
Birmingham,
B30 2PT.

Mondelez Ireland,
Freephone 1-800 678708
Malahide Road,
Coolock,
Dublin 5.
www.cadbury.co.uk

Telephone Helpline

0800 818181 (UK)
1-800 678708

Web Address

www.cadbury.co.uk